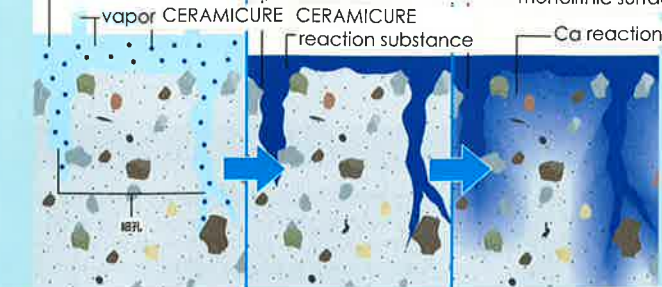


# Dual effects of surface sealing and chemical reaction increase STRENGTH !

**Initial evaporation**  
Penetrates into concrete, evaporates and seal up hollow on the surface

**Creates sound surface!**  
2-3 hours after application, surface is completely covered by hardened substance created by CERAMICURE.

**Reaction with "Ca"**  
Further, calcium in the concrete keeps its reaction to make a monolithic surface.



Silicate concrete surface hardener

## CERAMICURE

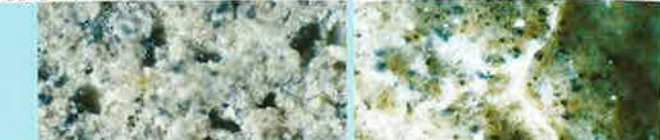
is an inorganic aqueous silicate. By simple application onto concrete surface, it permeates into the depth of capillary to make a solid and to harden the surface. Further, repeating reaction with calcium in concrete, it improves the surface hard and rigid. Thanks to its surface that does not permeate easily, cleaning becomes easier.

- Surface Hardening
- Cleaning Effect
- Non-Toxic/ Odor

- Improves abrasion resistance to inhibit dusting.
- Thanks to its deeper permeability, it does not peel-off.
- Inhibits penetration of oil and liquid, (Hydraulic permeability 67%) (※Marks of oil and the like remain.)
- Safe for being aqueous.
- Expectable cleaning effect.

■ **SEALING effect** <Observation of SEALING effect> CERAMICURE was applied on mortar board. After 30 minutes passed, surface was rinsed. After one month passed, the test specimen board was observed by a microscope with x 200 magnification.

BEFORE : Mortar without CERAMICURE    AFTER : Mortar with CERAMICURE



Many fine pores are found. Fragile Particles layer supposedly littance was observed.

CERAMICURE seals the surface and is observed to have permeated into micro cracks deeply.

■ **STAIN inhibition effect** <Test method> CERAMICURE was applied on cement mortar board to be kept for 7 days by cold curing and carbon paste was forced to rub the surface. The surface was wiped off by wet cotton cloth to observe the state of removal and staining of carbon paste.

BEFORE : Mortar without CERAMICURE    AFTER : Mortar with CERAMICURE



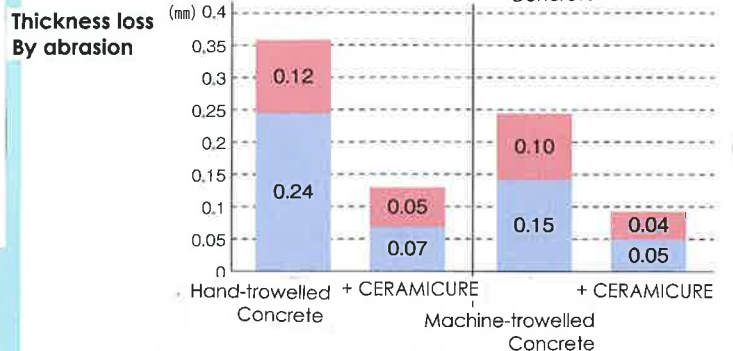
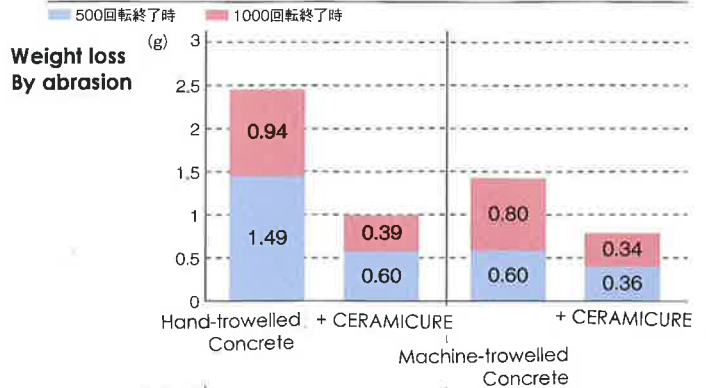
<Result> Carbon paste was easily removed, which proves superior cleaning effect.

Major USES recommended

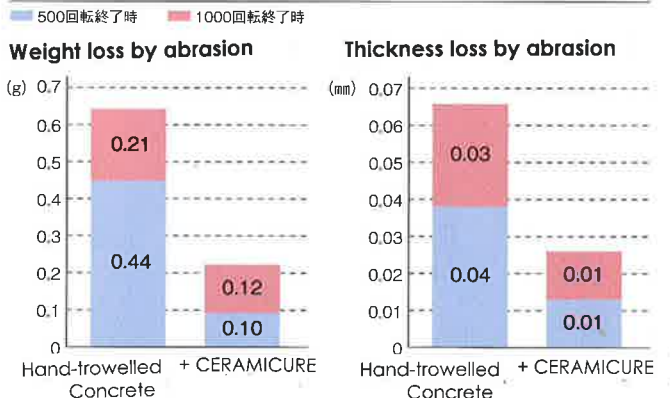
- Factory and warehouse floor
- Distribution center, super-market, Gas station
- Protection of hard type floor finishing

### Abrasion test compared to concrete

(I) 試験条件: 摩耗輪 GC-150-H / 荷重 250g / 500回転・1000回転



(II) 試験条件: 摩耗輪 CS-17 / 荷重 1000g / 500回転・1000回転



### Water absorption prevention test

Test item	mortar w/o	W/ CERAMICURE	Test method
Permeability	5.98 g	0.14 g	Measured permeated water after 2 hrs.
Ratio to concrete	100	2.3	

### Package

	18kg/can	Applicable for 70~120 m <sup>2</sup> to concrete substrate. (Varies by substrate condition.)
--	----------	--

※下地の吸い込み状態に応じて、上記の施工可能面積よりも増減することがあります。  
※本商品はコンクリート塗布後、床にたまる余剰分を拭き取る工程があります。上記の使用量は、この余剰分も含むものになります。

### 安全に関する注意事項

- 眼や口に入ったり人体に付着しないように注意してください。
- 施工の際は適切な保護具を着用してください。
- 眼や口に入ったり皮膚に触れた場合は、多量の水で洗い流し、すぐに医師にご相談ください。